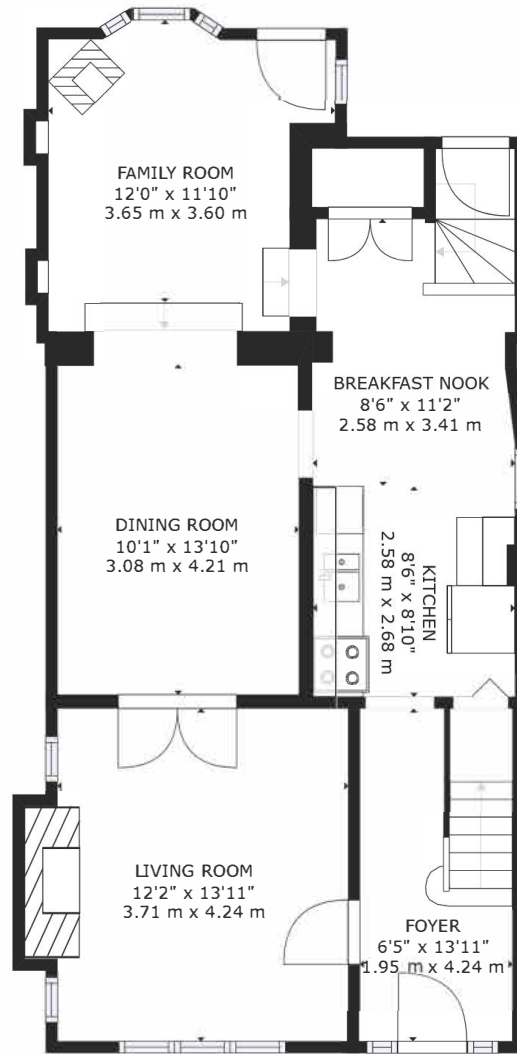
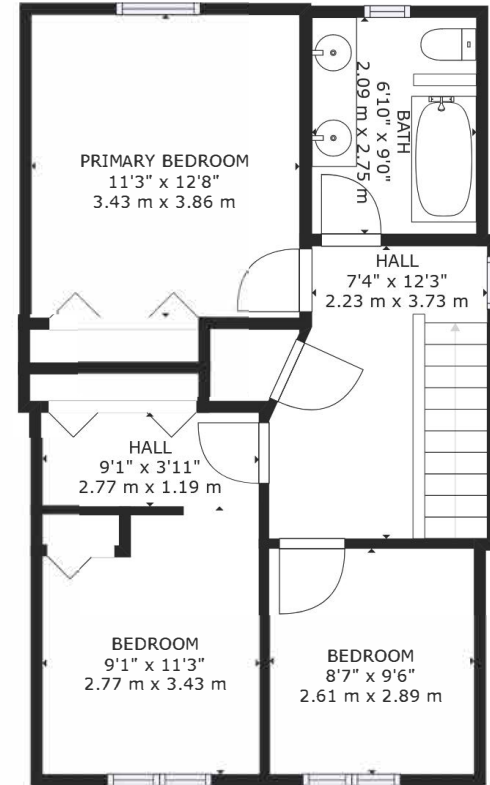


FLOOR 1  
LOWER LEVEL



FLOOR 2 - MAIN LEVEL



FLOOR 3 - UPPER LEVEL

356 Kingswood Road

GROSS INTERNAL AREA  
 FLOOR 1: 390 sq. ft, 36 m2, FLOOR 2: 847 sq. ft, 79 m2  
 FLOOR 3: 639 sq. ft, 59 m2  
 TOTAL: 1876 sq. ft, 174 m2  
 SIZES AND DIMENSIONS ARE APPROXIMATE, ACTUAL MAY VARY.

