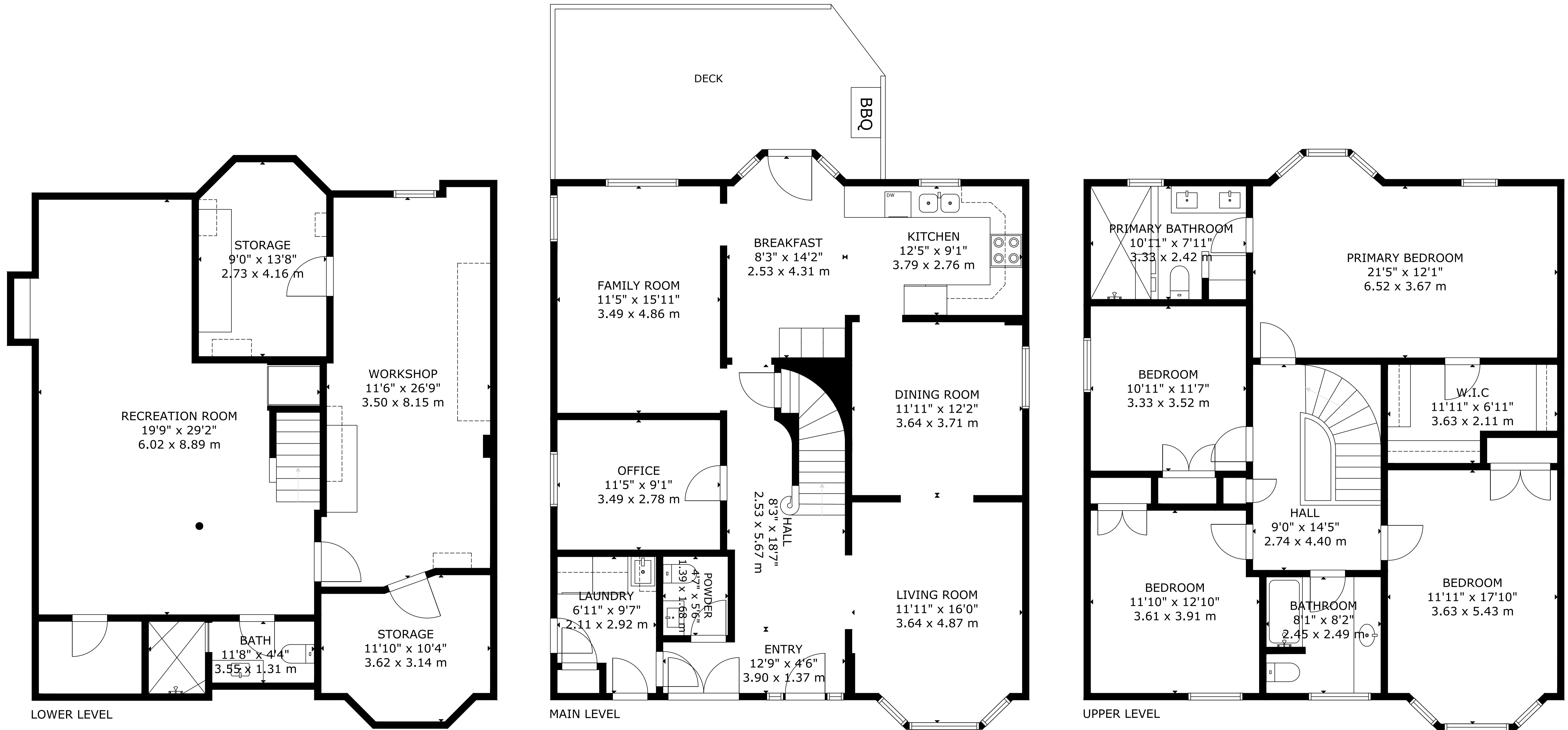


# 4 Pemberton Court



GROSS EXTERNAL AREA  
 TOTAL: 328 m<sup>2</sup>/3,522 sq ft  
 LOWER LEVEL: 106 m<sup>2</sup>/1,137 sq ft, MAIN LEVEL: 111 m<sup>2</sup>/1,190 sq ft, UPPER LEVEL: 111 m<sup>2</sup>/1,195 sq ft  
 SIZE AND DIMENSIONS ARE APPROXIMATE, ACTUAL MAY VARY